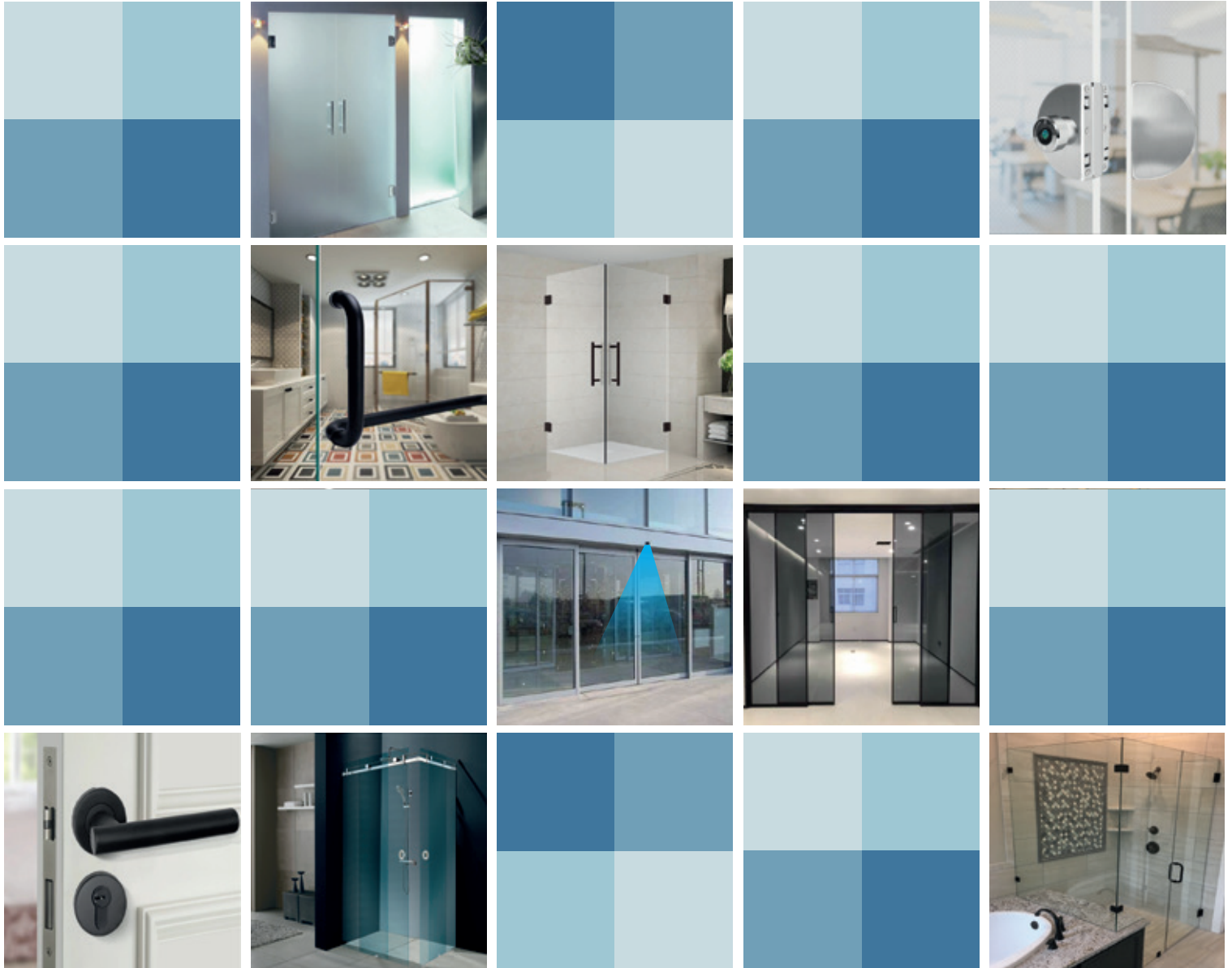




## Architectural Glass Hardware



## Product Catalogue



## About Us

**CORE is a Well Established Brand Since 2002**, stands for the most trustworthy brand in providing the Architectural Glass Solutions across the World. Core has a specialization in the **Glass Architectural Hardware**. Core Product Range is an Expert's choice for **Offices, Malls, Showrooms, Hospitals, Studios** and even for your Homes. We have large warehousing facility to acquire and store our products. We also offer more comfortable and safety options with our logistic services and with competent expert advisers to complete your dream projects. In order to meet the Growing Demand from both individual and institutional clients, we have a system that allow us to keep side by side changing dynamics in **Interior Designing, Constructions and Demographics** at standard level, So by this we are able to have loyal customer base across the market. We have Ethical Business Policy, Competitive Price which helps us in making a Huge Clientele.

## Our Strengths:

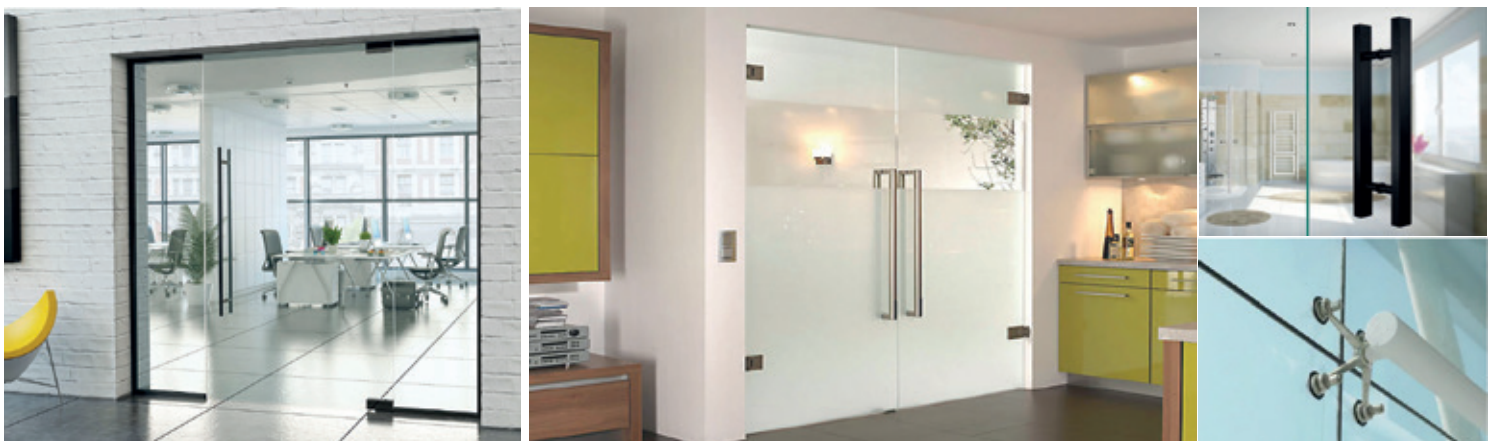
- 20 Years of Extensive Experience in this Industry.
- Dedicated Technical Team with the experience of over 20 years.
- Modular and Advanced Fittings.
- Dedicated Sales and Customer Support Team.
- Excellent in Introducing Exclusive Products range constantly.
- Design Clients needs.
- Unlock client ideas into perfect figures.
- Transforms Client's Visualization to Reality.

## Extremely Strict Quality Standards:

**CORE** provides an exclusive grade of metal according to the National and International Market Standards. Our all components passed through the Strict Quality parameters ensuring safety and functionality of every product. We assure to maintain the quality at reliable rates that meets the budget set by our valued clients.

## Business Opportunities With Us:

- ✓ With our valuable experience of 20 years in this Industry. We offer Hardware Dealing Companies to join hands for desirable business outcome through **Dealership**.
- ✓ We provide **Distributorship** Opportunities with Low Investments and Merchandising.
- ✓ We encourage startups to showcase our **Products in Display** for better understanding of their customers needs.
- ✓ Core welcomes the network of expert of installer to become **Authorised Installer** to start, Switch their business growth.
- ✓ We believe in **Collaboration, Ideation, Implementation** and **Value Creation**.

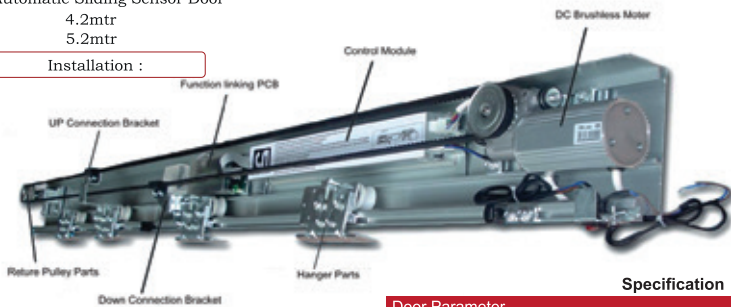


## AUTOMATIC SLIDING SENSOR DOOR



**CASSD-01**  
Automatic Sliding Sensor Door  
4.2mtr  
5.2mtr

Installation :



Specification

### Door Parameter

Single Leaf Maximum Opening	1200mm x 2400mm
Bi-parting Door Maximum Opening	2200mm x 2400mm
Maximum Door Weight Single Leaf	75kg to 90kg (Single Door)
Maximum Door Weight Double Leaf	75kg x 2 Door (Bi-parting)

### Features and Advantages

1. Wide range of power-supply operation.
2. Intelligent control system.
3. Drive equipment with low noise
4. Double door interlock function



## 2+2 AUTOMATIC SYNCHRO SLIDING DOOR



**CASS-01(2+2)**

Fixed Door Left Door Right Fixed

### Features and Advantages

- > Automatic Telescopic Sliding System (2+2) are suitable for center opening in Extensive Areas.
- > It is Useful to Slide Two Panels simultaneously in opposite direction.
- > Activated via motion sensor or switch button.
- > Soft Close Sliding.
- > It turns a Normal Sliding into the unique one.
- > Reliable, Efficient and Safe in Sliding.
- > Suitable for External and Internal areas.
- > Standard size of each panel: 1000mm x 3000mm.
- > Suitable for Glass Thickness 8mm
- > Door Weight Capacity of each panel: Upto 70Kg
- > Material Used: Hardware SS 304

Aluminium Profiles – 6463

## 1+3 AUTOMATIC TELESCOPIC SLIDING DOOR



**CASTS-03(1+3)**

Fixed Door-1 Door-2 Door-3

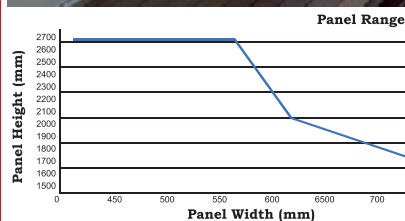
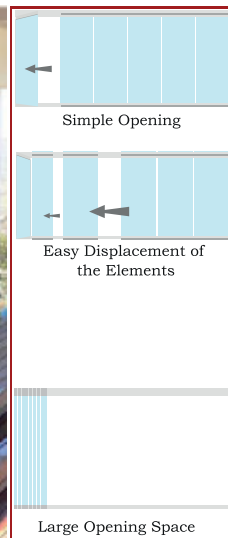
### Features and Advantages

- > Automatic Telescopic Sliding System are suitable for one way opening in Extensive Areas.
- > It is Useful for Simultaneous Sliding of Three Panels in the same direction.
- > Activated via motion sensor or switch button.
- > Soft Close Sliding.
- > It turns a Normal Sliding into the unique one.
- > Reliable, Efficient and Safe in Sliding.
- > Suitable for External and Internal areas.
- > Standard size of each panel: 1000mm x 3000mm.
- > Suitable for Glass Thickness 8mm
- > Door Weight Capacity of each panel: Upto 70Kg
- > Material Used: Hardware SS 304

Aluminium Profiles – 6463

## SLIDE AND SWING

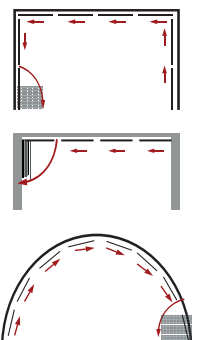
**CESS-01**



### Technical Specifications:

- > Glass Thickness : 8, 10, 12 mm
- > Maximum Height : 2700 mm
- > Panel Width Range : 750 mm
- > Panel : Customised
- > Fix Section : 55 x 55 mm (Top & Bottom Rail)
- > Sliding Section : 60 x 32 mm ( Sliding Glass)

### Window Shapes



## 2+2 SYNCHRO SLIDING DOOR



CSSS-01(2+2)



### Features and Advantages

- > Telescopic Sliding System are suitable for center opening in Extensive Areas.
- > It is Useful for Sliding of Two Panels in the opposite direction.
- > Soft Close Sliding.
- > Standard size of each panel: 1000mm x 3000mm.
- > Suitable for Glass Thickness 8mm
- > Door Weight Capacity of each panel: Upto 70Kg



CHS-01 (G)  
Top / Bottom Profile



CSTS-UT-01 (G)  
Upper Track



CSTS-UTC-01 (G)  
Upper Track Cover



CDS-JB-02 (G)  
Pasting Profile



CSP-SHL-01 (G)  
Handle With Lock



CDS-JB-01 (G)  
Divider Profile



CVS-01 (G)  
Side Profile



CSP-SH-02 (G)  
Sliding Handle



CAPL-90°-01 (SS)  
L Jointer

## 1+3 TELESCOPIC SLIDING DOOR



CSTS-03(1+3)



### Features and Advantages

- > Telescopic Sliding System are suitable for one way opening in Extensive Areas.
- > It is Useful for Sliding of Three Panels in the same direction.
- > Soft Close Sliding.
- > Standard size of each panel: 1000mm x 3000mm.
- > Suitable for Glass Thickness 8mm
- > Door Weight Capacity of each panel: Upto 70Kg



CHS-01 (BM)  
Top / Bottom Profile



CSTS-UT-01 (BM)  
Upper Track



CSTS-UTC-01 (BM)  
Upper Track Cover



CDS-JB-02 (BM)  
Pasting Profile



CSP-SHL-01 (BM)  
Handle With Lock



CDS-JB-01 (BM)  
Divider Profile



CVS-01 (BM)  
Side Profile

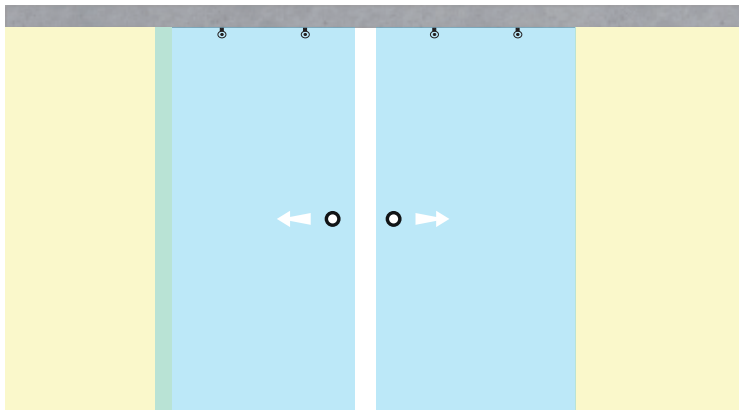


CSP-SH-02 (BM)  
Sliding Handle



CAPL-90°-01 (SS)  
L Jointer

## 2+2 FRAMELESS SYNCHRO SLIDING



### Features and Advantages

- > Frameless Telescopic Sliding System are suitable for center Opening in Extensive Areas.
- > It is Useful for Simultaneous sliding of Two Panels in the opposite direction.
- > It turns a normal sliding into the unique One.
- > Standard size of each panel: 1000mm x 3000mm
- > Suitable for Glass Thickness 8mm and 10mm
- > Door Weight Capacity of each panel: Upto 70Kg
- > Material Used: Hardware SS 304

Aluminium Profiles – 6463

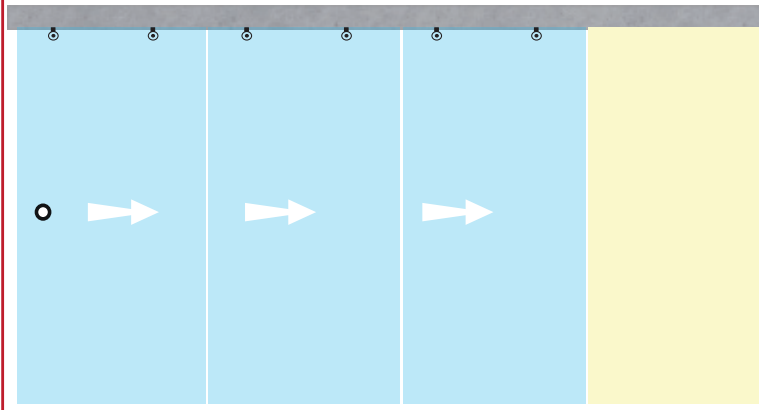
- > Standard Colour: Black Matt, Gold, Rosegold, Champagne

CSSS-FL-01(2+2)

₹ 93750.00



## 1+3 FRAMELESS TELESCOPIC SLIDING DOOR



### Features and Advantages

- > Frameless Telescopic Sliding System are suitable for one way Opening in Extensive Areas.
- > It is Useful for Simultaneous sliding of Three Panels in the same direction.
- > It turns a normal sliding into the unique One.
- > Standard size of each panel: 1000mm x 3000mm
- > Suitable for Glass Thickness 8mm and 10mm
- > Door Weight Capacity of each panel: Upto 70Kg
- > Material Used: Hardware SS 304
- Aluminium Profiles – 6463
- > Standard Colour: Black Matt, Gold, Rosegold, Champagne

CSTS-FL-03(1+3)

₹ 127500.00



CSTS-UTC-01 (G)  
Upper Track Cover



CSL-A2 (G)  
Sliding Roller



CSL-HN-50 (G)  
Sliding Handle



CSTS-UT-01 (G)  
Upper Track

# CENTER SLIDING FOLDING SYSTEM

**CASSD-01**  
4 Door Complete Set



**CCSFL-A2**  
Folding Door Roller



**CCSFL-H1**  
Wall to Glass Hinge



**CCSFL-H2**  
Glass to Glass Hinge



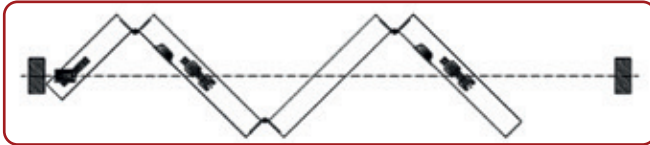
**CCSFL-LK**  
Sliding Glass Door Lock



**CCSFL-B1**  
Upper Track



**CSL-HN-50**  
Sliding Handle



**Features**

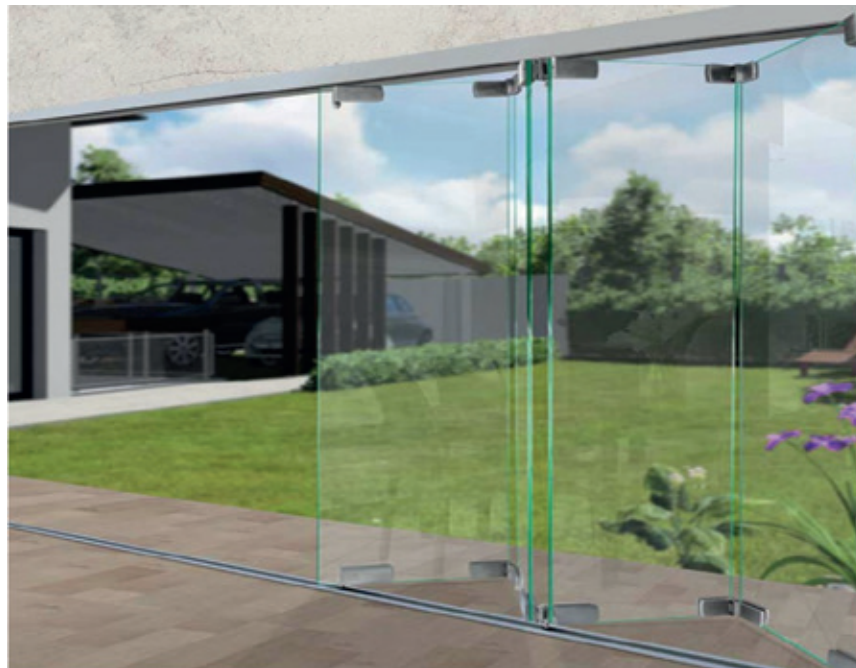
- > Maximum Weight per Door : 60kg
- > Maximum Width per Door : 900mm
- > Maximum Height per Door : 2400mm
- > Suitable for : 8mm, 10mm Glass Thickness

> Material Used : Hardware SS 304  
Aluminium Profiles – 6463

# SLIDING FOLDING SYSTEM

**CSFL-444**  
4 Door Complete Set

**CSFL-444**  
Center Opening (2+2)



**CSFL-A6**  
Glass Door Hinge



**CSFL-A9**  
Wall to Glass Hinge



**CSFL-A10**  
Folding Door Roller



**CSFL-A11**  
Folding Door Roller



**CSFL-A12**  
Lower Column Clip



**CSFL-A13L/R**  
Glass Door Bolt



**CSFL-A18R/L**  
Glass Door Bolt



**CSFL-C1**  
Upper Track (4Mtr.)



**CSFL-A15**  
Lower Track (4Mtr.)



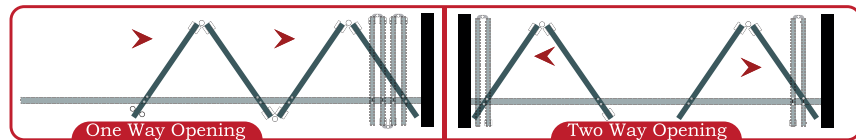
**CSFL-A14**  
Lower Column Clip



**CSFL-A16**  
Upper Fixing Clip



**CSFL-A17**  
Lower Fixing Clip



**Features**

- > Maximum Weight per Door : 70kg
  - > Maximum Width per Door : 900mm
  - > Maximum Height per Door : 2400mm
  - > Suitable for : 8mm, 10mm Glass Thickness
- > Material Used : Hardware SS 304  
Aluminium Profiles – 6463

# CANOPY FITTINGS



**CCF-10**  
Wall to Glass



**CCF-20**  
Wall to Glass



**CCF-30**  
Wall to Glass



**CCF-40**  
Wall to Glass



**CCF-1**  
Wall to Glass  
Connector



**CCF-2**  
Rod to Glass  
Connector



**CCF-3**  
Wall to Rod  
Connector



**CCF-4**  
Canopy Rod  
with Thread



**CCF-11**  
Wall to Glass  
Connector



**CCF-22**  
Adjustable Glass  
Connector



**CCF-33**  
Wall  
Connector



**CCF-44**  
Threaded  
Sleeve



**CSP-B-221**  
One Way Spider



**CSP-B-222A (90°)**  
Two Way Spider



**CSP-B-222 (180°)**  
Two Way Spider



**CSP-B-224**  
Four Way Spider



**CSP-B-224 (90°)**  
Four Way Spider

## SPIDER FITTING

### SPIDER WITHOUT FIN

### SPIDER WITH FIN



**CSP-A4**  
Four Way Spider



**CSP-A44**  
Two Way Spider (Wall Mounted)



**CSP-A22**  
One Way Spider (Wall Mounted)



**CSP-A2**  
Two Way Spider

### FIN PLATES



**CFP-200**  
Fin Plate (200mm)



**CFP-300**  
Fin Plate (300mm)

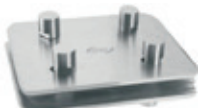


**CFP-350**  
Fin Plate (350mm)



**CFP-400**  
Fin Plate (400mm)

### SPLICE PLATES



**CSP-200**  
Splice Plate (200mm)



**CSP-250**  
Splice Plate (250mm)



**CSP-300**  
Splice Plate (300mm)



**CSP-350**  
Splice Plate (350mm)

## POINT FIXED GLASS CONNECTORS

**CPFC-1**  
Wall to Glass (Adjustable)  
(Available in 82mm & 103mm)



**CPFC-2**  
Glass to Glass (Adjustable)  
(Available in 82mm & 103mm)



**CPFC-11**  
Wall to Glass (Fix)  
(Available in 82mm & 103mm)



**CPFC-22**  
Glass to Glass (Adjustable with fin)  
(Available in 82mm & 103mm)



# ROUTEELS



**CSP-AFB-36FL**  
Articulated Routel  
(Flat Head)



**CSP-AFB-36CS**  
Articulated Routel  
(Counter Sunk Hole)



**CSP-FB-FL**  
Fixed Routel  
(Flat Head)



**CSP-IA-01**  
Iron Assembly



**CSP-FB-CS**  
Fixed Routel  
(Counter Sunk)



**CSP-FBM**  
Fixed Routel  
(Mini)



**CSP-FB(FH/CS)**  
Fixed Bolt  
(Flat Head / Counter Sunk)

## POINT SPIDERS WITH FIN



**CSP-D-22**  
One Way Spider for Wall/Ceiling



**CSP-D-44 (90°)**  
Two Way Spider 90° for Wall/Ceiling



**CSP-D-2 (180°)**  
Two Way Spider 180° With Fin



**CSP-D-4**  
Four Way Spider With Fin

## SPIDERS WITHOUT FIN (BLACK MATT)



**CSP-B-221 (BM)**  
One Way Spider



**CSP-B-222A (90°) (BM)**  
Two Way Spider



**CSP-B-222 (180°) (BM)**  
Two Way Spider



**CSP-B-224 (BM)**  
Four Way Spider



## SPIDERS WITH FIN (BLACK MATT)



**CSP-A4 (BM)**  
Four Way Spider



**CSP-A44 (BM)**  
Two Way Spider (Wall Mounted)



**CSP-A2 (BM)**  
Two Way Spider (Wall Mounted)



**CSP-A4 (BM)**  
One Way Spider

## FIN PLATES (BLACK MATT)



**CFP-200 (BM)**  
Fin Plate (200mm)



**CFP-300 (BM)**  
Fin Plate (300mm)



**CFP-350 (BM)**  
Fin Plate (350mm)



**CFP-400 (BM)**  
Fin Plate (400mm)

## SPLICE PLATES (BLACK MATT)



**CSP-200 (BM)**  
Splice Plate (200mm)



**CSP-250 (BM)**  
Splice Plate (250mm)



**CSP-300 (BM)**  
Splice Plate (300mm)



**CSP-350 (BM)**  
Splice Plate (350mm)

## ROUTEELS (BLACK MATT)



**CSP-FB-FL (BM)**  
Fixed Routel



**CSP-AFB-36FL (BM)**  
Articulated Routel

# DOOR HANDLES



**H-TYPE (Round)**

- 25x200x250
- 25x250x300
- 32x302x457
- 32x450x600
- 32x480x600
- 32x600x750
- 32x600x900
- 32x900x1200
- 32x1200x1500



**H-TYPE (G)**

- 32x302x457
- 32x450x600



**H-TYPE (RG)**

- 32x302x457
- 32x450x600



**H-TYPE (BM)**

- 32x302x457
- 32x450x600



**H-TYPE (AT)**

- 32x302x457
- 32x450x600



**H-TYPE (CG)**

- 32x302x457
- 32x450x600



**H-TYPE (WD)**

- 32x302x457
- 32x450x600

**Door Handle With Lock**



**C-TYPE**

- 25x302x327
- 25x450x475
- 25x600x625
- 25x900x925



**S-TYPE**

- 32x302x457



**CDH-A1 (Adjustable)**

- 32x302x457
- 32x450x600
- 32x600x900
- 32x900x1200



**CDH-1**

- 25/25x302x327
- 30/30x450x480
- 30/30x600x630
- 30/30x900x930



**CDH-1 (BM)**

- 25/25x302x332
- 30/30x450x430



**CDH-2**

- 38x302x457

**CGHL-55**

- 35x1500
- 35x1500
- 35x1500

(Black Matt)  
(RG/G/AT/CG)



**CDH-3**

- 32x302x450



**CDH-4**

- 32x302x450



**CDH-5**

- 25x25x302x457
- 30x30x450x600
- 30x30x480x600
- 30x30x600x750
- 30x30x600x900
- 30x30x900x1200
- 30x30x1200x1500



**CDH-6**

- 32x302x450



**CDH-7**

- 32x302x450



**CDH-8 (SS)**

- 25x300x327
- 32x450x487
- 32x600x632



**CDH-8 (BM)**

- 25x300x327
- 32x450x487
- 32x600x632



**CDH-8 (G)**

- 25x300x327
- 32x450x487
- 32x600x632



**CDH-8 (RG)**

- 25x300x327
- 32x450x487
- 32x600x632



**CDH-9**

- 32x302x450



**CDH-10**

- 32x450x600



**CDH-11**

- 32x302x450



**CDH-12 (SS)**

- 25x302x327
- 25x450x475
- 25x600x625





**CDH-WSS-1**  
25/45x302x450  
25/45x450x550



**CDH-WSS-2**  
25/25x302x327  
30/30x450x480



**CDH-WSS-3**  
25/25x302x327  
30/30x450x480



**CDH-WSS-4**  
25/25x302x327  
30/30x450x480



**CDH-WSS-5**  
25/25x302x327



**CDH-WSS-6**  
32x300x332  
32x450x482

## CRYSTAL DOOR HANDLES



**CDH-BUBLE**  
38x302x457  
38x450x600



**CDH-CRY-1 (Crystal)**  
32x200x300  
32x300x450  
32x450x600



**CDH-CRY-2 (Crackl)**  
32x200x300  
32x300x450  
32x450x600



**CDH-CRY-3**  
32x200x300  
32x300x450  
32x450x600



**CDH-CRY-4**  
32x200x300  
32x300x450  
32x450x600



**CDH-CRY-5**  
32x200x300  
32x300x450  
32x450x600



**CDH-CRY-6**  
32x200x300  
32x300x450  
32x450x600



**CDH-CRY-7**  
32x200x300  
32x300x450  
32x450x600



**CDH-CRY-8**  
32x200x300  
32x300x450  
32x450x600



**CDH-CRY-9**  
38x200x300  
44x300x450  
50x450x600



**CDH-CRY-10**  
38x200x300  
44x300x450  
50x450x600



**CDH-CRY-11**  
38x200x300  
44x300x450  
50x450x600



**CDH-CRY-12**  
38x200x300  
44x300x450  
50x450x600



**CDH-CRY-13**  
38x200x300  
44x300x450  
50x450x600



**CDH-CRY-14**  
50x300x450



**CDH-CRY-15**  
50x300x450



**CDH-CRY-16**  
50x300x450



**CDH-CRY-17**  
32/25x200x300  
32/25x300x450  
32/25x450x600



**CDH-CRY-18**  
32/25x200x300  
32/25x300x450  
32/25x450x600



**CDH-CRY-19**  
44x300x450

## DOOR KNOB



**CDK-1**  
Door Knob



**CDK-2**  
Door Knob



**CDK-3**  
Door Knob



**CDK-4**  
Door Knob



**CDK-5 (G, RG, BM)**  
Door Knob



## DOOR LOCKS WITHOUT CUTOUT



**CWCL-01**  
Glass to Glass Lock  
(Only Key)



**CWCL-02**  
Wall to Glass Lock  
(Only Key)



**CWCL-03**  
Glass to Glass Lock  
(Key & Knob)



**CWCL-04**  
Wall to Glass Lock  
(Key & Knob)



**CWCL-05**  
Glass to Glass Lock  
(Key & Knob)



**CWCL-06**  
Wall to Glass Lock  
(Key & Knob)



**CWCL-07**  
Glass to Glass Lock  
(Only Knob)



**CWCL-08**  
Wall to Glass Lock  
(Only Knob)



**CWCL-09 (Pin Type)**  
Glass to Glass Lock  
(Key & Knob)



**CWCL-10 (Pin Type)**  
Wall to Glass Lock  
(Key & Knob)



**CWCL-11 Mini**  
Glass to Glass Lock  
(Only Knob)



**CWCL-12 Mini**  
Wall to Glass Lock  
(Only Knob)

## BIOMETRIC GLASS DOOR LOCK



**CWCL-13**  
Glass to Glass Lock  
(Only Key)



**CWCL-14**  
Wall to Glass Lock  
(Only Key)



**CWCL-17**  
Finger Print Touch Lock  
(Wall to Glass)



**CWCL-18**  
Finger Print Touch Lock  
(Glass to Glass)

## DOOR LOCKS WITH CUTOUT



**CSDL-11**  
Sliding Door Lock  
(Glass to Glass)



**CSDL-12**  
Sliding Door Lock  
(Wall to Glass)



**CSDL-13A+13C**  
Sliding Door Lock  
(with Strike Plate)



**CSDL-13A+13B**  
Sliding Door Lock  
(with Strike Box)



**CSDL-14A+14B**  
Sliding Door Lock  
(with Sliding Handle)



**CGML-01**  
Glass to Glass Lock  
(Key & Knob)



**CGML-02**  
Wall to Glass Lock  
(Key & Knob)



## SHOWER HINGES

Material: Stainless Steel 304 Grade



**CSH-11 H/P**  
Wall to Glass 90°  
Off Set Hinge



**CSH-11**  
Wall to Glass 90°  
Hinge



**CSH-22**  
Glass to Glass 180°  
Hinge



**CSH-33**  
Glass to Glass 135°  
Hinge



**CSH-44**  
Glass to Glass 90°  
Hinge



**CSH-55**  
Wall to Glass 90°  
Fix Bracket



**CSH-66**  
Wall to Glass 90°  
Fix Bracket

## GOLD FINISH



**CSH-11 H/P (G)**  
Wall to Glass 90°  
Off Set Hinge



**CSH-11 (G)**  
Wall to Glass 90°  
Hinge



**CSH-22 (G)**  
Glass to Glass 180°  
Hinge



**CSH-33 (G)**  
Glass to Glass 135°  
Hinge



**CSH-44 (G)**  
Glass to Glass 90°  
Hinge



**CSH-55 (G)**  
Wall to Glass 90°  
Fix Bracket

## ROSE GOLD FINISH



**CSH-11 H/P (RG)**  
Wall to Glass 90°  
Off Set Hinge



**CSH-11 (RG)**  
Wall to Glass 90°  
Hinge



**CSH-22 (RG)**  
Glass to Glass 180°  
Hinge



**CSH-33 (RG)**  
Glass to Glass 135°  
Hinge



**CSH-44 (RG)**  
Glass to Glass 90°  
Hinge



**CSH-55 (RG)**  
Wall to Glass 90°  
Fix Bracket

## BLACK MATT FINISH



**CSH-11 H/P (BM)**  
Wall to Glass 90°  
Off Set Hinge



**CSH-11 (BM)**  
Wall to Glass 90°  
Hinge



**CSH-22 (BM)**  
Glass to Glass 180°  
Hinge



**CSH-33 (BM)**  
Glass to Glass 135°  
Hinge



**CSH-44 (BM)**  
Glass to Glass 90°  
Hinge



**CSH-55 (BM)**  
Wall to Glass 90°  
Fix Bracket

## ANTIQUÉ FINISH



**CSH-11 H/P (AT)**  
Wall to Glass 90°  
Off Set Hinge



**CSH-11 (AT)**  
Wall to Glass 90°  
Hinge



**CSH-22 (AT)**  
Glass to Glass 180°  
Hinge



**CSH-33 (AT)**  
Glass to Glass 135°  
Hinge



**CSH-44 (AT)**  
Glass to Glass 90°  
Hinge



**CSH-55 (AT)**  
Wall to Glass 90°  
Fix Bracket

## CHAMPAGNE FINISH



**CSH-11 H/P (CG)**  
Wall to Glass 90°  
Off Set Hinge



**CSH-11 (CG)**  
Wall to Glass 90°  
Hinge



**CSH-22 (CG)**  
Glass to Glass 180°  
Hinge



**CSH-33 (CG)**  
Glass to Glass 135°  
Hinge



**CSH-44 (CG)**  
Glass to Glass 90°  
Hinge



**CSH-55 (CG)**  
Wall to Glass 90°  
Fix Bracket

## SHOWER KNIGHT HEAD ACCESSORIES

Round Series Dia 19mm  
Material: Brass / SS 304



**CSKH-1**  
Wall to Rod  
SS  
Color



**CSKH-2**  
Rod to Glass  
SS  
Color



**CSKH-3**  
Rod to Rod  
SS  
Color



**CSKH-12**  
Wall to Rod + Glass  
SS  
Color



**CSKH-32**  
Rod to Rod + Glass  
SS  
Color



**CSKH-4**  
Rod to Glass  
SS  
Color



**CSKH-5**  
Rod to Rod T Connector  
SS  
Color



**CSKH-ACC-19**  
Reinforcing Rod  
SS  
Color



**CSKH-11**  
Wall to Rod  
SS  
Color



**CSKH-22**  
Rod to Glass  
SS  
Color



**CSKH-33**  
Rod to Rod  
SS  
Color



**CSKH-44**  
Rod to Glass  
SS  
Color



**CSKH-55**  
Rod to Rod T Connector  
SS  
Color



**CSKH-ACC-25x25**  
Reinforcing Rod  
SS  
Color

Square Series Dia 25x25mm

## ED SERIES (10X30MM)



**CSKH-111**  
Track to Track  
Connector  
SS  
Color



**CSKH-222**  
Track to Track  
Connector  
SS  
Color



**CSKH-333**  
Track to Track  
Connector  
SS  
Color



**CSKH-ACC-10/30**  
Connecting Track  
SS  
Color

## HYDRAULIC SHOWER HINGES



**CHSH-01(SS)**  
Wall to Glass Hinge  
SS



**CHSH-02(SS)**  
Glass to Glass Hinge  
SS

# SHOWER SLIDING SYSTEM



- Rollers - 2 Set
- Track to Glass Holder - 2 pc
- Floor Guide - 1 pc
- Door Stopper - 2 pc
- Sliding Door 2mtr. - 1 pc
- Sliding Handle - 1 pc
- Wall to Track Connector - 2 pc

CP Finish  
Brass Combo



**CSL-ED-11(CP)**  
Roller



**CSL-ED-A2(CP)**  
Track to Glass Holder



**CSL-ED-A4(CP)**  
Floor Guide



**CSL-ED-A5(CP)**  
Wall to track Connector



**CSL-HN-50(CP)**  
Sliding Handle



**CSL-ED-A3(CP)**  
Stopper



**CSKH-ACC-10/30(CP)**  
Connecting Track

Gold Finish  
Brass Combo



**CSL-ED-11(G)**  
Roller



**CSL-ED-A2(G)**  
Track to Glass Holder



**CSL-ED-A4(G)**  
Floor Guide



**CSL-ED-A5(G)**  
Wall to track Connector



**CSL-HN-50(G)**  
Sliding Handle



**CSL-ED-A3(G)**  
Stopper



**CSKH-ACC-10/30(G)**  
Connecting Track

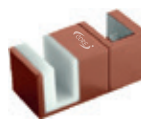
Rosegold  
Finish  
Brass Combo



**CSL-ED-11(RG)**  
Roller



**CSL-ED-A2(RG)**  
Track to Glass Holder



**CSL-ED-A4(RG)**  
Floor Guide



**CSL-ED-A5(RG)**  
Wall to track Connector



**CSL-HN-50(RG)**  
Sliding Handle



**CSL-ED-A3(RG)**  
Stopper



**CSKH-ACC-10/30(RG)**  
Connecting Track

Black Matt  
Finish  
Brass Combo



**CSL-ED-11(BM)**  
Roller



**CSL-ED-A2(BM)**  
Track to Glass Holder



**CSL-ED-A4(BM)**  
Floor Guide



**CSL-ED-A5(BM)**  
Wall to track Connector



**CSL-HN-50(BM)**  
Sliding Handle



**CSL-ED-A3(BM)**  
Stopper



**CSKH-ACC-10/30(BM)**  
Connecting Track

Antique  
Finish  
Brass Combo



**CSL-ED-11(AT)**  
Roller



**CSL-ED-A2(AT)**  
Track to Glass Holder



**CSL-ED-A4(AT)**  
Floor Guide



**CSL-ED-A5(AT)**  
Wall to track Connector



**CSL-HN-50(AT)**  
Sliding Handle



**CSL-ED-A3(AT)**  
Stopper



**CSKH-ACC-10/30(AT)**  
Connecting Track

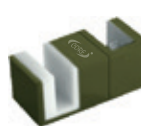
Champagne  
Finish  
Brass Combo



**CSL-ED-11(CG)**  
Roller



**CSL-ED-A2(CG)**  
Track to Glass Holder



**CSL-ED-A4(CG)**  
Floor Guide



**CSL-ED-A5(CG)**  
Wall to track Connector



**CSL-HN-50(CG)**  
Sliding Handle



**CSL-ED-A3(CG)**  
Stopper



**CSKH-ACC-10/30(CG)**  
Connecting Track

# CURVED TRACK SLIDING SYSTEM



- Rollers - 2 pc
- Track Mounting Bracket - 2 pc
- Floor Guide - 1 pc
- Track to Track 90° Bracket - 1 pc (Optional)
- Sliding Track 2 mtr./ 4mtr. - 1 pc
- Fixing Tool / Key - 1 pc
- Door Stopper - 2 pc

<p>CP Finish Combo with 2 mtr Track</p> <p>CP Finish Double Door 90° Combo with 4 mtr Track</p>	<p><b>CSL-44G (CP)</b> Floor Guide</p>	<p><b>CSL-55-TB (CP)</b> Track to Track 90° Bracket</p>	<p><b>CSL-55-A5 (CP)</b> Track Mounting Bracket</p>	<p><b>CSL-55-A1 (CP)</b> Knob Clamp Roller (SS)</p>	<p><b>CSL-55-A3 (CP)</b> Door Stopper</p>	<p><b>CSL-55-T (CP)</b> Top Track</p>	<p>Fixing Tool/Key</p>
<p>Gold Finish Combo with 2 mtr Track</p> <p>Gold Finish Double Door 90° Combo with 4 mtr Track</p>	<p><b>CSL-44G (G)</b> Floor Guide</p>	<p><b>CSL-55-TB (G)</b> Track to Track 90° Bracket</p>	<p><b>CSL-55-A5 (G)</b> Track Mounting Bracket</p>	<p><b>CSL-55-A1 (G)</b> Knob Clamp Roller (SS)</p>	<p><b>CSL-55-A3 (G)</b> Door Stopper</p>	<p><b>CSL-55-T (G)</b> Top Track</p>	<p>Fixing Tool/Key</p>
<p>Rosegold Finish Combo with 2 mtr Track</p> <p>Rosegold Finish Double Door 90° Combo with 4 mtr Track</p>	<p><b>CSL-44G (RG)</b> Floor Guide</p>	<p><b>CSL-55-TB (RG)</b> Track to Track 90° Bracket</p>	<p><b>CSL-55-A5 (RG)</b> Track Mounting Bracket</p>	<p><b>CSL-55-A1 (RG)</b> Knob Clamp Roller (SS)</p>	<p><b>CSL-55-A3 (RG)</b> Door Stopper</p>	<p><b>CSL-55-T (RG)</b> Top Track</p>	<p>Fixing Tool/Key</p>
<p>Blackmatt Finish Combo with 2 mtr Track</p> <p>Blackmatt Finish Double Door 90° Combo with 4 mtr Track</p>	<p><b>CSL-44G (BM)</b> Floor Guide</p>	<p><b>CSL-55-TB (BM)</b> Track to Track 90° Bracket</p>	<p><b>CSL-55-A5 (BM)</b> Track Mounting Bracket</p>	<p><b>CSL-55-A1 (BM)</b> Knob Clamp Roller (SS)</p>	<p><b>CSL-55-A3 (BM)</b> Door Stopper</p>	<p><b>CSL-55-T (BM)</b> Top Track</p>	<p>Fixing Tool/Key</p>
<p>Antique Finish Combo with 2 mtr Track</p> <p>Antique Finish Double Door 90° Combo with 4 mtr Track</p>	<p><b>CSL-44G (AT)</b> Floor Guide</p>	<p><b>CSL-55-TB (AT)</b> Track to Track 90° Bracket</p>	<p><b>CSL-55-A5 (AT)</b> Track Mounting Bracket</p>	<p><b>CSL-55-A1 (AT)</b> Knob Clamp Roller (SS)</p>	<p><b>CSL-55-A3 (AT)</b> Door Stopper</p>	<p><b>CSL-55-T (AT)</b> Top Track</p>	<p>Fixing Tool/Key</p>
<p>Champagne Finish Combo with 2 mtr Track</p> <p>CP Finish Double Door 90° Combo with 4 mtr Track</p>	<p><b>CSL-44G (CG)</b> Floor Guide</p>	<p><b>CSL-55-TB (CG)</b> Track to Track 90° Bracket</p>	<p><b>CSL-55-A5 (CG)</b> Track Mounting Bracket</p>	<p><b>CSL-55-A1 (CG)</b> Knob Clamp Roller (SS)</p>	<p><b>CSL-55-A3 (CG)</b> Door Stopper</p>	<p><b>CSL-55-T (CG)</b> Top Track</p>	<p>Fixing Tool/Key</p>



## GLASS CONNECTORS Material : SS 304

Eco ₹ 160.00 (3mm)



**CGC-1**  
U Connector  
(3mm)  
(4mm)



**CGC-2**  
Glass to Glass 135°  
(3mm)  
(4mm)



**CGC-3**  
Glass to Glass 90°  
(3mm)  
(4mm)



**CGC-4**  
L Connector  
(3mm)  
(4mm)



**CGC-4 (Mini)**  
Mini L Connector  
(3mm)



**CGC-5**  
Glass to Glass 180°  
(3mm)  
(4mm)



**CGC-6**  
T-connector  
(3mm)  
(4mm)

## ROUND GLASS CONNECTORS Material : SS 304



**CGC-11**  
U Connector  
(3mm)  
(4mm)



**CGC-22**  
Glass to Glass 135°  
(3mm)  
(4mm)



**CGC-33**  
Glass to Glass 90°  
(3mm)  
(4mm)



**CGC-44**  
L Connector  
(3mm)  
(4mm)



**CGC-55**  
Glass to Glass 180°  
(3mm)  
(4mm)

## GLASS CONNECTORS Material : Brass



**CGC-111**  
U Connector  
(Brass)



**CGC-222**  
Glass to Glass 135°  
(Brass)



**CGC-333**  
Glass to Glass 90°  
(Brass)



**CGC-444**  
L Connector  
(Brass)



**CGC-555**  
Glass to Glass 180°  
(Brass)

## GLASS CONNECTORS Material : SS 304 Casted 4mm Thick



**CGC-1A**  
U Connector



**CGC-2A**  
Glass to Glass 135°



**CGC-3A**  
Glass to Glass 90°



**CGC-4A**  
L Connector



**CGC-5A**  
Glass to Glass 180°



**CGC-7**  
Big Connector

## AVAILABLE COLOURS

## GOLD FINISH



**CGC-1 (G)**  
U Connector



**CGC-2 (G)**  
Glass to Glass 135°



**CGC-3 (G)**  
Glass to Glass 90°



**CGC-4 (G)**  
L Connector



**CGC-5 (G)**  
Glass to Glass 180°

## ROSE GOLD FINISH



**CGC-1 (RG)**  
U Connector



**CGC-2 (RG)**  
Glass to Glass 135°



**CGC-3 (RG)**  
Glass to Glass 90°



**CGC-4 (RG)**  
L Connector



**CGC-5 (RG)**  
Glass to Glass 180°

## BLACK MATT FINISH



**CGC-1 (BM)**  
U Connector



**CGC-2 (BM)**  
Glass to Glass 135°



**CGC-3 (BM)**  
Glass to Glass 90°



**CGC-4 (BM)**  
L Connector



**CGC-5 (BM)**  
Glass to Glass 180°

## ANTIQUÉ FINISH



**CGC-1 (AT)**  
U Connector



**CGC-2 (AT)**  
Glass to Glass 135°



**CGC-3 (AT)**  
Glass to Glass 90°



**CGC-4 (AT)**  
L Connector



**CGC-5 (AT)**  
Glass to Glass 180°

## CHAMPAGNE FINISH



**CGC-1 (CG)**  
U Connector



**CGC-2 (CG)**  
Glass to Glass 135°



**CGC-3 (CG)**  
Glass to Glass 90°



**CGC-4 (CG)**  
L Connector



**CGC-5 (CG)**  
Glass to Glass 180°

## WOODEN FINISH



**CGC-1 (WD)**  
U Connector



**CGC-2 (WD)**  
Glass to Glass 135°



**CGC-3 (WD)**  
Glass to Glass 90°



**CGC-4 (WD)**  
L Connector



**CGC-5 (WD)**  
Glass to Glass 180°



# SOFT CLOSE SLIDING SYSTEM



**CSCS-A11**

8 Wheel Both Side Soft Close Sliding System



**CSL-44-B11**

Aluminium Track (Single)



**CSCS-A22 (Big Roller)**

8 Wheel Both Side Soft Close Sliding System



**CSL-44-B33**

Aluminium Track (Door + Fix)

## TRACK SLIDING SYSTEM



**CSL-44-A1 (Set)(CP)**

Roller (S.S.)

(CSL-44-A1-2 Rollers,  
CSL-44-A3-2 Stopper,  
CSL-44G-1 Floor Guide)



**CSL-44-A1 (Set)(G)**

Roller (S.S.)

(CSL-44-A1-2 Rollers,  
CSL-44-A3-2 Stopper,  
CSL-44G-1 Floor Guide)



**CSL-44-A1 (Set)(RG)**

Roller (S.S.)

(CSL-44-A1-2 Rollers,  
CSL-44-A3-2 Stopper,  
CSL-44G-1 Floor Guide)



**CSL-44-A1 (Set)(BM)**

Roller (S.S.)

(CSL-44-A1-2 Rollers,  
CSL-44-A3-2 Stopper,  
CSL-44G-1 Floor Guide)



**CSL-44-A1 (Set)(AT)**

Roller (S.S.)

(CSL-44-A1-2 Rollers,  
CSL-44-A3-2 Stopper,  
CSL-44G-1 Floor Guide)



**CSL-44-A1 (Set)(CG)**

Roller (S.S.)

(CSL-44-A1-2 Rollers,  
CSL-44-A3-2 Stopper,  
CSL-44G-1 Floor Guide)



**CSL-44-A1 (Set)(WD)**

Roller (S.S.)

(CSL-44-A1-2 Rollers,  
CSL-44-A3-2 Stopper,  
CSL-44G-1 Floor Guide)



**CSL-44-A2 (Set)(CP)**

Roller (Brass/S.S.)

(CSL-44-A2-2 Rollers,  
CSL-44-A3-2 Stopper,  
CSL-44G-1 Floor Guide)



**CSL-44-A2 (Set)(G)**

Roller (Brass/S.S.)

(CSL-44-A2-2 Rollers,  
CSL-44-A3-2 Stopper,  
CSL-44G-1 Floor Guide)



**CSL-44-A2 (Set)(RG)**

Roller (Brass/S.S.)

(CSL-44-A2-2 Rollers,  
CSL-44-A3-2 Stopper,  
CSL-44G-1 Floor Guide)



**CSL-44-A2 (Set)(BM)**

Roller (Brass/S.S.)

(CSL-44-A2-2 Rollers,  
CSL-44-A3-2 Stopper,  
CSL-44G-1 Floor Guide)



**CSL-44-A2 (Set)(AT)**

Roller (Brass/S.S.)

(CSL-44-A2-2 Rollers,  
CSL-44-A3-2 Stopper,  
CSL-44G-1 Floor Guide)



**CSL-44-A2 (Set)(CG)**

Roller (Brass/S.S.)

(CSL-44-A2-2 Rollers,  
CSL-44-A3-2 Stopper,  
CSL-44G-1 Floor Guide)



**CSL-44-A2 (Set)(WD)**

Roller (Brass/S.S.)

(CSL-44-A2-2 Rollers,  
CSL-44-A3-2 Stopper,  
CSL-44G-1 Floor Guide)



**CSL-44-B1(CP)**

Aluminium Track (Single)  
Available in 10,13,16ft



**CSL-44-B1(G)**

Aluminium Track (Single)  
Available in 10,13,16ft



**CSL-44-B1(RG)**

Aluminium Track (Single)  
Available in 10,13,16ft



**CSL-44-B1(BM)**

Aluminium Track (Single)  
Available in 10,13,16ft



**CSL-44-B1(AT)**

Aluminium Track (Single)  
Available in 10,13,16ft



**CSL-44-B1(CG)**

Aluminium Track (Single)  
Available in 10,13,16ft



**CSL-44-B1(WD)**

Aluminium Track (Single)  
Available in 10,13,16ft



**CSL-44-B2(CP)**

Aluminium Track  
(Double Door)  
Available in 10,13,16ft



**CSL-44-B2(G)**

Aluminium Track  
(Double Door)  
Available in 10,13,16ft



**CSL-44-B2(RG)**

Aluminium Track  
(Double Door)  
Available in 10,13,16ft



**CSL-44-B2(BM)**

Aluminium Track  
(Double Door)  
Available in 10,13,16ft



**CSL-44-B2(AT)**

Aluminium Track  
(Double Door)  
Available in 10,13,16ft



**CSL-44-B2(CG)**

Aluminium Track  
(Double Door)  
Available in 10,13,16ft



**CSL-44-B2(WD)**

Aluminium Track  
(Double Door)  
Available in 10,13,16ft



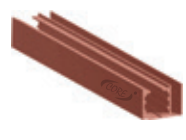
**CSL-44-B3(CP)**

Aluminium Track  
(Door+Fix Glass)  
Available in 10,13,16ft



**CSL-44-B3(G)**

Aluminium Track  
(Door+Fix Glass)  
Available in 10,13,16ft



**CSL-44-B3(RG)**

Aluminium Track  
(Door+Fix Glass)  
Available in 10,13,16ft



**CSL-44-B3(BM)**

Aluminium Track  
(Door+Fix Glass)  
Available in 10,13,16ft



**CSL-44-B3(AT)**

Aluminium Track  
(Door+Fix Glass)  
Available in 10,13,16ft



**CSL-44-B3(CG)**

Aluminium Track  
(Door+Fix Glass)  
Available in 10,13,16ft



**CSL-44-B3(WD)**

Aluminium Track  
(Door+Fix Glass)  
Available in 10,13,16ft



**CSL-HN-50 (CP)**  
Sliding Handle  
Dia 50mm



**CSL-HN-50 (G)**  
Sliding Handle  
Dia 50mm



**CSL-HN-50 (RG)**  
Sliding Handle  
Dia 50mm



**CSL-HN-50 (BM)**  
Sliding Handle  
Dia 50mm



**CSL-HN-50 (AT)**  
Sliding Handle  
Dia 50mm



**CSL-HN-50 (CG)**  
Sliding Handle  
Dia 50mm



**CSL-HN-50 (WD)**  
Sliding Handle  
Dia 50mm



**CSL-44-R8 (Set)**  
Roller (S.S.)  
(CSL-44-R8-2 Rollers,  
CSL-44-R8-2 Stopper,  
CSL-44G-1 Floor Guide)



**CSL-44-A3**  
Stopper



**CSL-44-A9**  
Wall to Track Connector



**CSL-44-A5**  
Wall to Track Clamp



**CSL-44G**  
Floor Guide



**CSL-44-A6**  
Glass to Track Clamp



**CSL-HN-50 (Hollow)**  
Sliding Handle (Dia 50mm)



**CSL-HN-55**  
Sliding Handle



**CSL-HN-135**  
Sliding Handle



**CSL-HN-92**  
Sliding Handle



## OFFICE SLIDING SYSTEM

(CP Finish)  
(Complete Set with 2 Mtr. Rod)



**CSL-33-TH (Optional)**  
Wall to Rod Clamp



**CSL-33-TH-G2**  
Glass to Rod Clamp



**CSL-33-TH-WL (Optional)**  
Wall to Rod Holder



**CSL-33B**  
Door Stopper



**CSL-22A**  
Office Sliding Roller



**CSL-33G**  
Floor Guide



**CSL-ACC-25**  
Office Sliding Pipe

Core's Office Sliding System are now trending in office interiors and commercial spaces which gives an artistic touch to interior designs.

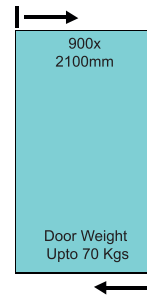
### Office Sliding Set Includes:

- Rollers - 2 pc
- Track to Glass Holder - 2 pc
- Floor Guide - 1 pc
- Office Sliding Pipe 2 mtr. - 1 pc
- Wall to Track Connector - 2 pc

# HYDRAULIC PATCH



**CHFS-100**  
Hydraulic Patch



No Digging Floor

## HYDRAULIC PATCH COMBO SET



**CHFS-100 (Combo)**  
Hydraulic Patch Combo  
CPF-2, CPL-1, Pivot (Total 4Pcs)



Top Patch



Top Pivot



Bottom Patch Lock

### Specification

- Floor Mounted
- Glass Thickness up to 12mm
- Maximum Door Height: 2100mm
- Maximum Door Width: 900mm
- Maximum Door Weight: upto 70kg



## SUPER SPRING FLOOR SPRING COMBO SET (JAPANESE BEARING)



**CFS-8400S (Combo-Super Spring)**  
Double Cylinder Floor Spring Combo  
CPF-2, CPF-3 CPL-1, Pivot-1 (Total 5 Pcs.)



Top Patch



Top Pivot



Bottom Patch



Bottom Patch Lock



### Specification

- Floor Digging Required
- Japanese Bearing Inside
- Glass Thickness up to 12mm
- Maximum Door Height: 2400mm
- Maximum Door Width: 1050mm
- Maximum Door Weight: 90 to 120kg
- Special Water Resistant Coating Inside

## DOUBLE CYLINDER FLOOR SPRING COMBO



**CFS-8400 (Combo)**  
Double Cylinder Floor Spring Combo  
CPF-2, CPF-3 CPL-1, Pivot-1 (Total 5 Pcs.)



Top Patch



Top Pivot



Bottom Patch



Bottom Patch Lock

### Specification

- Floor Digging Required
- Korean Bearing Inside
- Glass Thickness up to 12mm
- Maximum Door Height: 2400mm
- Maximum Door Width: 1050mm
- Maximum Door Weight: 90 to 120kg
- Special Water Resistant Coating Inside



## SINGLE CYLINDER FLOOR SPRING COMBO



**CFS-7400 (Combo)**  
Single Cylinder Floor Spring combo  
CPF-2, CPF-3, CPL-1, Pivot-1, (Total 5 Pcs.)



Top Patch



Top Pivot



Bottom Patch



Bottom Patch Lock

### Specification

- Floor Digging Required
- Korean Bearing Inside
- Glass Thickness up to 12mm
- Maximum Door Height: 2100mm
- Maximum Door Width: 800mm
- Maximum Door Weight: 70 to 90kg
- Special Water Resistant Coating Inside



## CFS-7400-FLOOR SPRING



**CFS-7400**  
Single Cylinder Floor Spring



## CFS-8400 FLOOR SPRING



**CFS-8400**  
Double Cylinder Floor Spring



## CFS-8400S FLOOR SPRING



**CFS-8400S**  
Double Cylinder Floor Spring



## CFS-9400-FLOOR SPRING



**CFS-9400 (Heavy Duty)**  
Double Cylinder Floor Spring



## CFS-10400 FLOOR SPRING



**CFS-10400**  
Double Cylinder Floor Spring



## CFS-6400 FLOOR SPRING



**CFS-6400** Single Cylinder Floor Spring  
**CFS-ACC-TP/BP** Top Pivot/Bottom Pivot for Wooden/Aluminium Door



## GOLD FINISH



**CFS-7400 (G) (Combo)**  
CFS-7400 (G), CPF-2 (G), CPF-3 (G), CPL-1 (G), Pivot-1 (G), Door Handle H-type(G) (Total 6 Pcs.)



**CFS-8400 (G) (Combo)**  
CFS-8400 (G), CPF-2 (G), CPF-3(G) , CPL-1 (G), Pivot-1 (G), Door Handle H-type(G) (Total 6 Pcs.)



## BLACK MATT FINISH



**CFS-7400 (BM) (Combo)**  
CFS-7400 (BM), CPF-2 (BM), CPF-3 (BM), CPL-1 (BM), Pivot-1 (BM), Door Handle H-Type(BM) (Total 6 Pcs.)



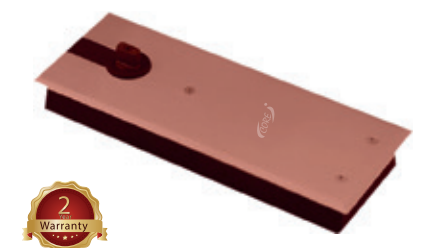
**CFS-8400 (BM) (Combo)**  
CFS-8400 (BM), CPF-2 (BM), CPF-3 (BM), CPL-1 (BM), Pivot-1 (BM), Door Handle (BM) (Total 6 Pcs.)



## ROSE GOLD (POLISHED/SATIN)



**CFS-7400 (RG) (Combo)**  
CFS-7400 (RG), CPF-2 (RG), CPF-3 (RG), CPL-1 (RG), Pivot-1 (RG), Door Handle H-Type (RG) (Total 6 Pcs.)



**CFS-8400 (RG) (Combo)**  
CFS-8400 (RG), CPF-2 (RG), CPF-3 (RG), CPL-1 (RG), Pivot-1 (RG), Door Handle H-Type (RG) (Total 6 Pcs.)



## ANTIQUUE FINISH



### CFS-7400 (AT) (Combo)

CFS-7400 (AT),  
CPF-2 (AT), CPF-3 (AT), CPL-1 (AT),  
Pivot-1 (AT), Door Handle H-Type(AT) (Total 6 Pcs.)



### CFS-8400 (AT) (Combo)

CFS-8400 (AT),  
CPF-2 (AT), CPF-3 (AT), CPL-1 (AT),  
Pivot-1 (AT), Door Handle H-Type(AT) (Total 6 Pcs.)



Top Patch



Bottom Patch



Top Pivot



Bottom Patch Lock



H-Type Handle

## CHAMPAGNE FINISH



### CFS-7400 (CG) (Combo)

CFS-7400 (CG),  
CPF-2 (CG), CPF-3 (CG), CPL-1 (CG),  
Pivot-1 (CG), Door Handle H-Type(CG) (Total 6 Pcs.)



### CFS-8400 (CG) (Combo)

CFS-8400 (CG),  
CPF-2 (CG), CPF-3 (CG), CPL-1 (CG),  
Pivot-1 (CG), Door Handle H-Type(CG) (Total 6 Pcs.)



Top Patch



Bottom Patch



Top Pivot



Bottom Patch Lock



H-Type Handle

## WOODEN FINISH



### CFS-7400 (WD) (Combo)

CFS-7400 (WD),  
CPF-2 (WD), CPF-3 (WD), CPL-1 (WD),  
Pivot-1 (WD), Door Handle H-Type(WD) (Total 6 Pcs.)



### CFS-8400 (WD) (Combo)

CFS-8400 (WD),  
CPF-2 (WD), CPF-3 (WD), CPL-1 (WD),  
Pivot-1 (WD), Door Handle H-Type(WD) (Total 6 Pcs.)



Top Patch



Bottom Patch



Top Pivot



Bottom Patch Lock



H-Type Handle



# PATCH FITTINGS



**CPF-1**  
BIG L-Patch



**CPF-2**  
Top Patch



**CPF-3**  
Bottom Patch



**CPF-4**  
Over Panel Patch with Pivot



**CPL-1**  
Bottom Patch Lock



**CPF-610**  
(Small L)



**CPF-640**  
Wall to Glass  
Connecting Patch



**CPF-640 A**  
Wall to Glass  
Connecting Patch



**CPF-650**  
Glass to Glass Connecting  
Patch with Wall/Ceiling



**CPF-41L**  
Over Panel Side Panel  
Connector with Fin (Left)



**CPF-41R**  
Over Panel Side Panel  
Connector with Fin (Right)



**CPF-610ST**  
Over Panel Side Panel  
Connector with Stopper



**CPF-51**  
Double Over Panel  
Patch With Fin



**CPF-610L**  
Triple Glass Patch  
Connector With Fin (Left)



**CPF-610R**  
Triple Glass Patch  
Connector With Fin (Right)



**CFS-ACC-GDP**  
Top Pivot for  
Patch Fitting Door



**CDS-1**  
Glass Door Stopper



**CGTB-01**  
Glass Tower Bolt

## AVAILABLE COLORS IN PATCH FITTING



**CPF-1 (G)**  
(Big L)



**CPF-1 (RG)**  
(Big L)



**CPF-1 (BM)**  
(Big L)



**CPF-1 (AT)**  
(Big L)



**CPF-1 (CG)**  
(Big L)



**CPF-1 (WD)**  
(Big L)



**CPF-4 (G)**  
Over Panel Patch  
with Pivot



**CPF-4 (RG)**  
Over Panel Patch  
with Pivot



**CPF-4 (BM)**  
Over Panel Patch  
with Pivot



**CPF-4 (AT)**  
Over Panel Patch  
with Pivot



**CPF-4 (CG)**  
Over Panel Patch  
with Pivot



**CPF-4 (WD)**  
Over Panel Patch  
with Pivot



**CPF-610 (G)**  
(Small L)



**CPF-610 (RG)**  
(Small L)



**CPF-610 (BM)**  
(Small L)



**CPF-610 (AT)**  
(Small L)



**CPF-610 (CG)**  
(Small L)



**CPF-610 (WD)**  
(Small L)



## MORTISE HANDLES



**CTMH-01**  
Mortise Handles



**CTMH-02**  
Mortise Handles



**CTMH-03**  
Mortise Handles



**CTMH-04**  
Mortise Handles



**CMLB-01**  
Mortise Lock Body



**CMLB-02**  
Mortise Lock Body



**CPI-11**  
Ultra Key Cylinder  
Both Side Key



**CPL-22**  
Ultra Key Cylinder  
One side Knob One Side Key

## DOOR CLOSER



**CDC-01**  
Door Closer  
Door weight capacity: 45kg



**CDC-02**  
Door Closer  
Door weight capacity: 65kg



**CDC-03**  
Concealed Door Closer  
Door weight capacity: 80kg

## SILICONE GUNS



**CSG-01**  
Silicone Gun (Heavy)



**CSG-02**  
Silicone Gun (Medium)



**CSG-03**  
Silicone Gun (Light)



**CSG-04**  
Silicone Pouch Gun (Bottle)

## GLASS CUTTER



Glass Cutter

## ALUMINIUM DOOR & WINDOW ACCESSORIES



**CDSH-01**  
Domal Sliding Handle



**CDSH-02**  
Casement Handle



**CDSH-03**  
Casement Handle (Small)



**CWFS-01**  
Friction Stay

## BRACKET SHELF HOLDER



**CBSH-01**  
Single Shelf Holder



**CBSH-02**  
Double Shelf Holder



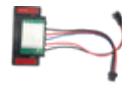
**Driver Controller**  
5 Watt  
10 Watt



**LED Strip**  
120 LED  
240 LED



**Double Sided Structural Glazing Tape**



**LED Mirror Sensor Switch**



## GLASS LIFTERS



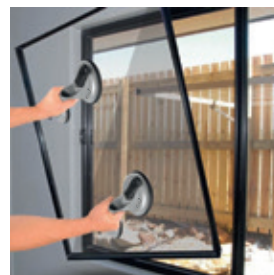
**CGL-1C**  
Glass Lifter With Single Cup



**CGL-2C**  
Glass Lifter with Two Cup



**CGL-3C**  
Glass Lifter with Three Cup





## Architectural Glass Hardware

### Branches

#### Delhi (Head Office)

A-7B, A Block, Jhilmil Industrial Estate  
Back Side of Dilshad Garden Metro Station  
Delhi, 110095

#### Agra (Uttar Pradesh)

183/9 Neerav Nikunj Phase-2  
Sikandra, Near Shanti Market  
Agra, Uttar Pradesh 282007

#### Jaipur (Rajasthan)

B-74 Ved Villa Colony, Swej Farm, Ramnagar Vistar,  
Near Mahatma Jyoti Rao Phoolle College  
Jaipur, Rajasthan 302019

#### Lucknow (Uttar Pradesh)

D-135, Meera Tower, Vibhuti Khand, Gomti Nagar,  
Lucknow, Uttar Pradesh 226010

#### Kolkata (West Bengal)

B-70/ H- 17, Radha Madhav Dutta Lane,  
Dr. S.C. Banerjee Road, Beliaghata, Near Jora Mandir  
Kolkata, West Bengal 700010

#### Kathmandu (Nepal)

Chappal Karkhana, Annapurna Marg, Maharajgunj,  
Kathmandu, Nepal - P.O. Box: 21725



[www.corehardware.in](http://www.corehardware.in)  
[www.corehardware.co.in](http://www.corehardware.co.in)



[sales@corehardware.in](mailto:sales@corehardware.in)  
[coreglassfittings@gmail.com](mailto:coreglassfittings@gmail.com)

### Core Overseas Presence

- |              |          |                 |          |              |             |
|--------------|----------|-----------------|----------|--------------|-------------|
| 1 Bangladesh | 5 Nepal  | 9 Ghana         | 13 Egypt | 17 Ethiopia  | 21 Nigeria  |
| 2 Uganda     | 6 Sudan  | 10 Kenya        | 14 Congo | 18 Moscow    | 22 Tanzania |
| 3 Australia  | 7 Kuwait | 11 Jordan       | 15 Oman  | 19 Palestine | 23 Turkey   |
| 4 Qatar      | 8 Yemen  | 12 Saudi Arabia | 16 UAE   | 20 Sri Lanka | 24 Bhutan   |



Scan QR Code to  
Visit Website

**Price are subject to change without prior notice**  
Product photos shown in the catalogue are only the visual  
and may be differ from original. The technical presentation  
and dimension in illustration and shown are for reference only.  
Please Refer the original product for toughened glass cut-out.



Scan QR Code to  
Catalogue

